



# PathPoint Software

Dynamic Discovery for Mainframe Batch Applications

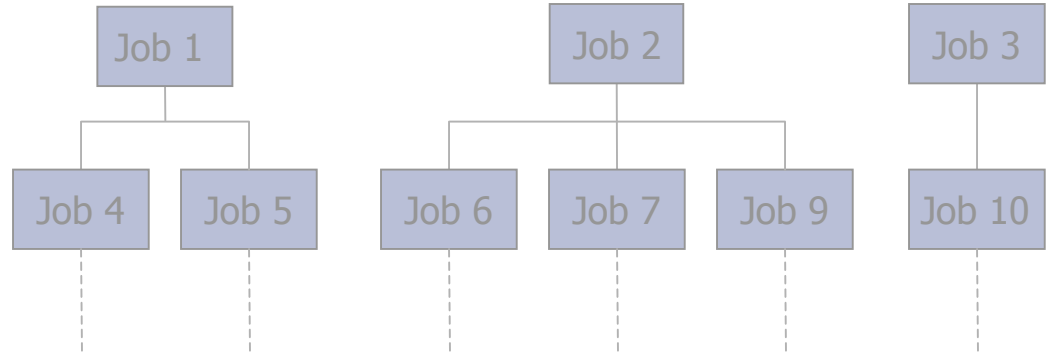
*Understand How Your Mainframe Batch Applications Really Work*

*Note: See PathPoint Product Overview for Complete Understanding*

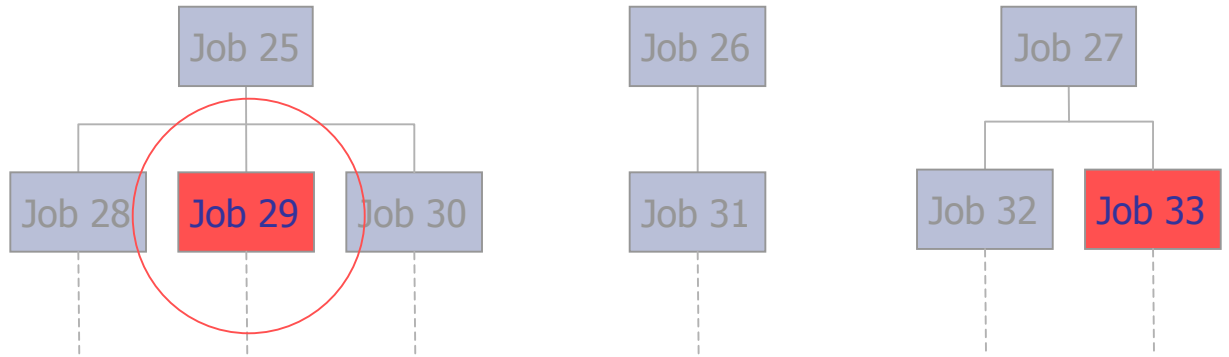


# Typical Batch Cycle

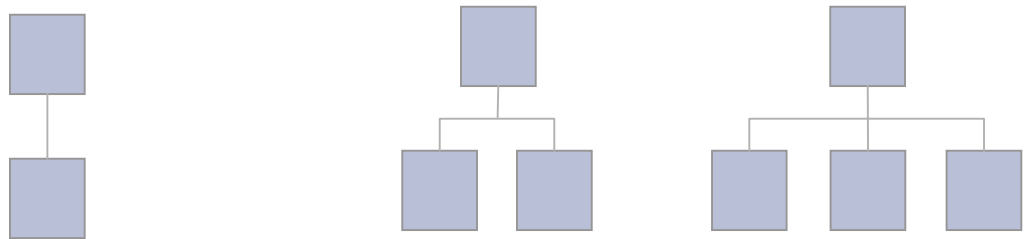
Preparation



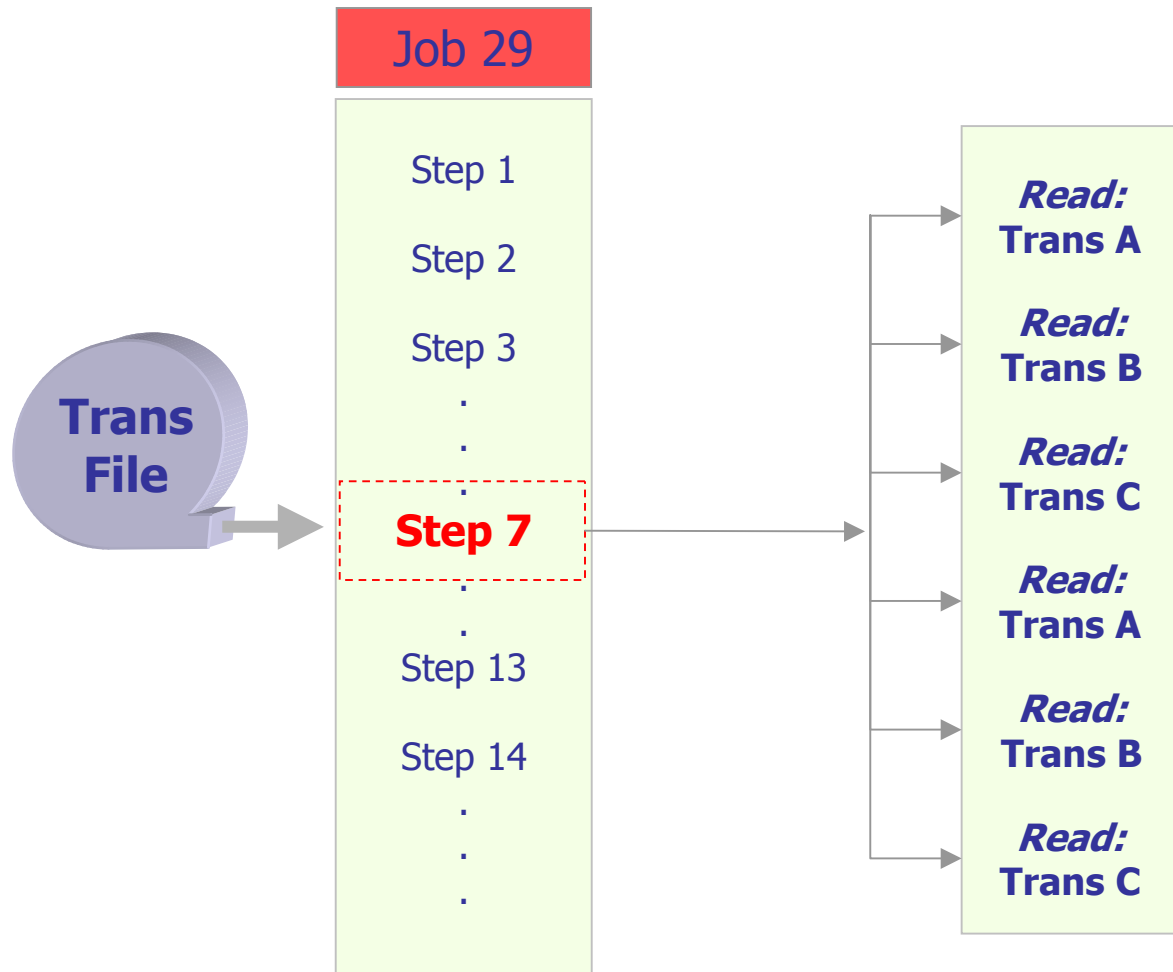
Processing



Reporting



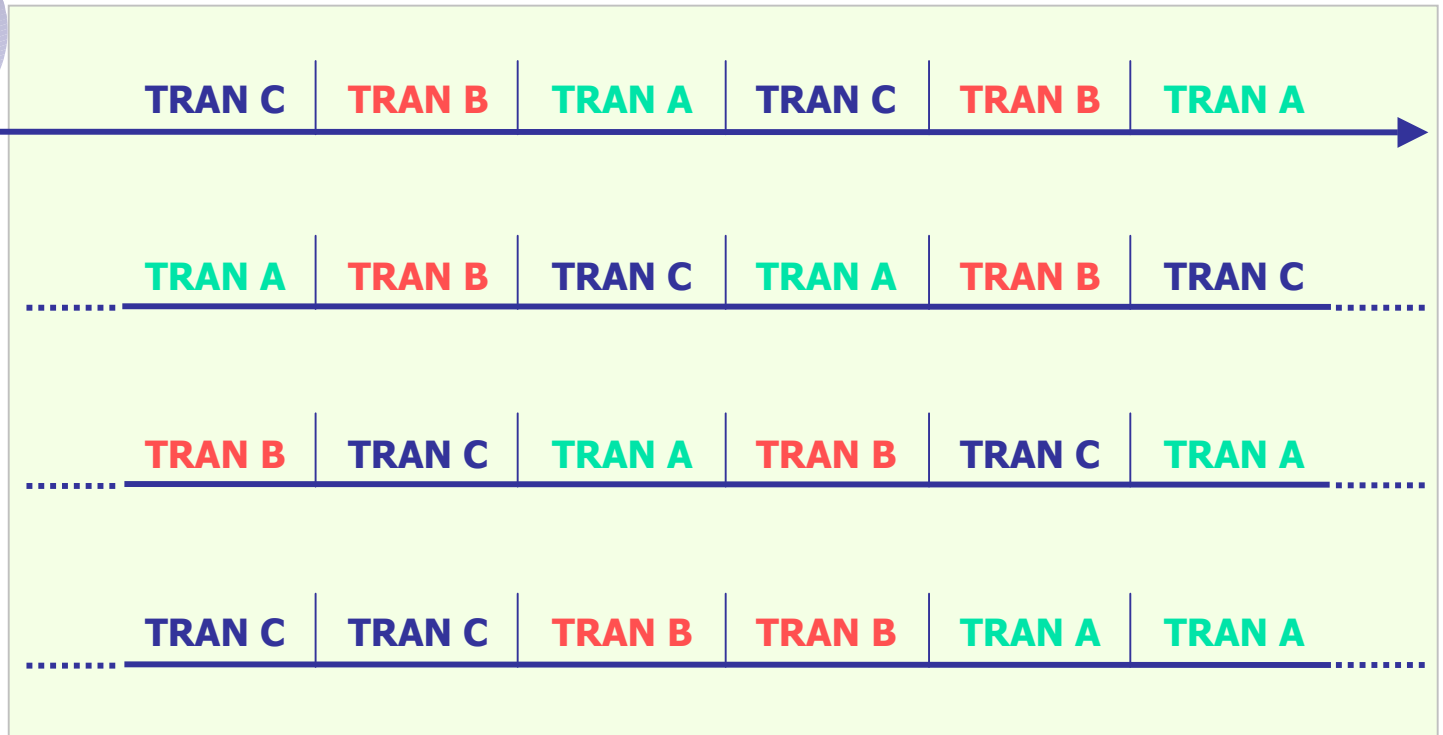
# A Closer Look at Batch Processing – *Job 29/Step 7 Involves Application Processing*



# Typical Batch Transaction File

*Many Batch Transactions are Duplicates*

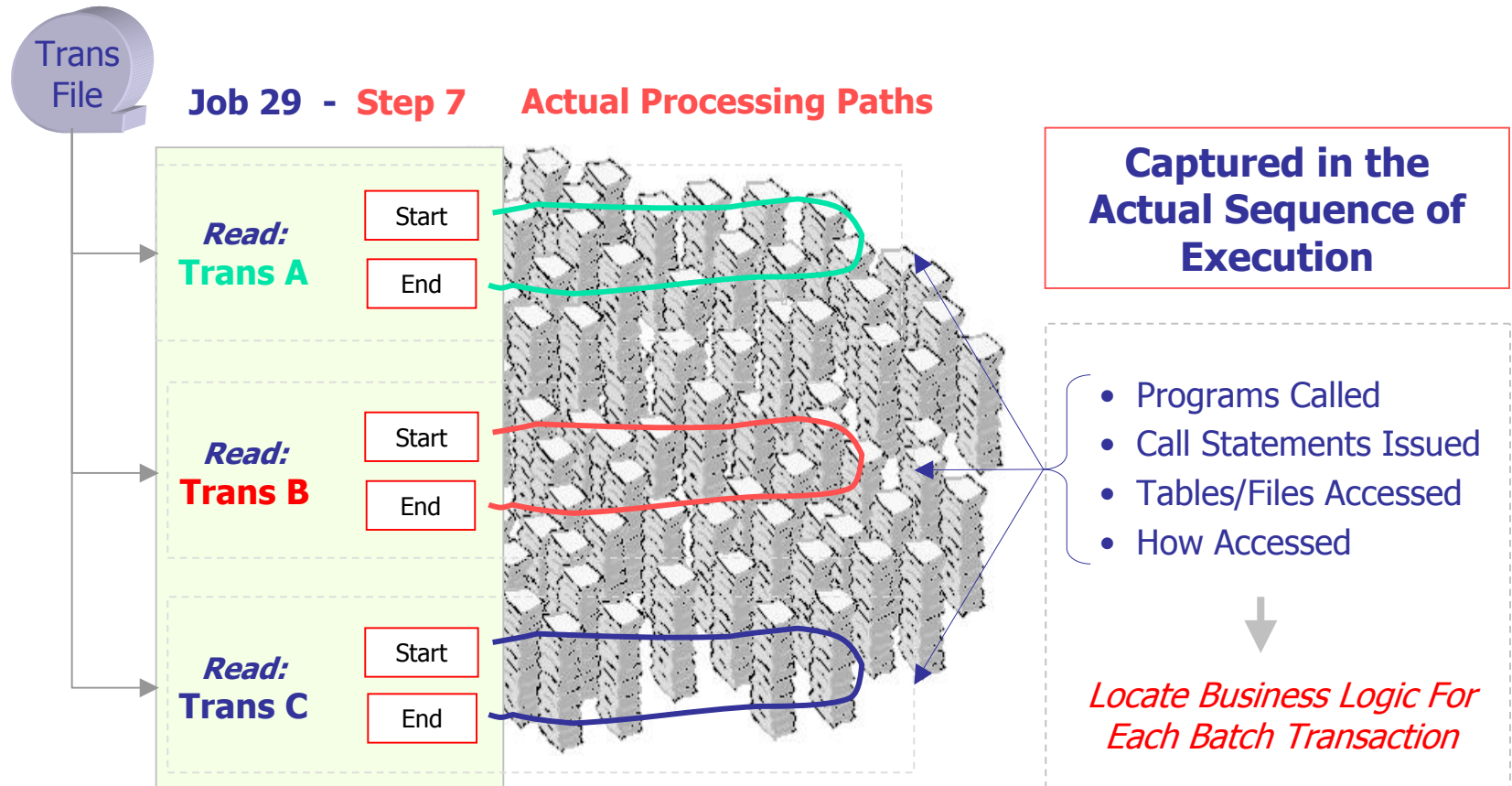
Trans File



- **A**, **B** and **C** are Unique Transactions

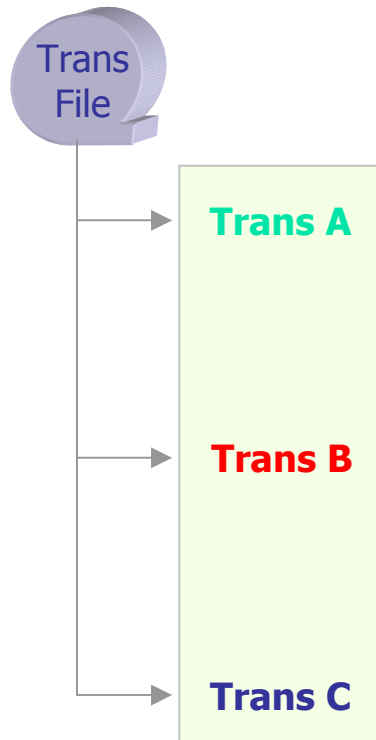
# PathPoint Provides What Analysts Need – *A View of Application Processing for Unique Batch Transactions*

## Batch Process – "Master File" Update Processing



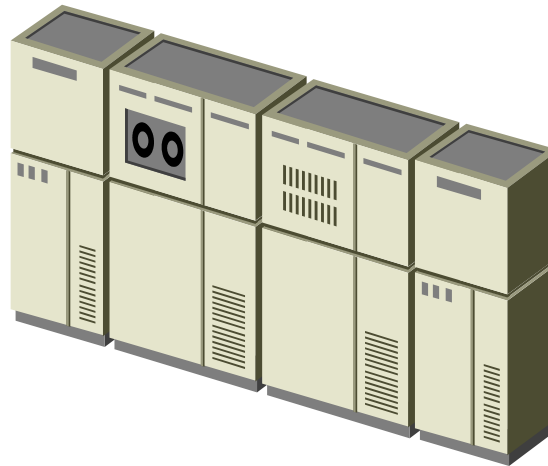
# The PathPoint Approach To Batch

Selected  
Batch Transactions



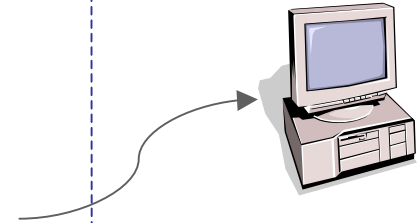
Mainframe Component  
Traces & Captures  
Processing Paths ...

As Job 29/Step 7  
Executes



**Mainframe Component**

Captured Results  
Downloaded  
To PC for Analysis



**PC Component**

## Batch Transaction (Job 29 / Step 7) – Process View

Sequence Number	Step Name	Program Name	Call Stmt Number	Call Statements In Sequence	Status Code				
1	3035	0.005	DB2A	SAEH6310	SAEH6310	DB2	2589	OPEN MBRTRIG_CSR	0
2	3035	0.000	DB2A	SAEH6310	SAEH6310	DB2	2656	FETCH MBRTRIG_CSR INTO :DCLSAV11800-MBR-TRIG.TRIG-ID , :DCLSAV00000-MBR-TRIG.TRIG-ID	0
3	3035	1.548	DB2A	SAEH6310	SAEH6312	DB2	2394	OPEN MBRS	0
4	3035	0.000	DB2A	SAEH6310	SAEH6312	DB2	2286	FETCH MBRS INTO :DCLSAV05801-MBR-COVG.MBR-COVG-ID , :DCLSAV00000-MBR-COVG.MBR-COVG-ID	0
5	3035	0.000	DB2A	SAEH6310	SAEB0002	DB2	1849	SET HOST VARIABLE WS-CURRENT-DATE = CURRENT_DATE	0
6	3035	0.001	DB2A	SAEH6310	SAEB0003	DB2	324	SELECT UNIV_CD_DESC_TXT INTO :DCLSAV00000-UNIVCODE.UNIV-CD	0
7	3035	0.000	DB2A	SAEH6310	SAEB0002	DB2	1849	SET HOST VARIABLE WS-CURRENT-DATE = CURRENT_DATE	0
8	3035	0.000	DB2A	SAEH6310	SAEB0003	DB2	324	SELECT UNIV_CD_DESC_TXT INTO :DCLSAV00000-UNIVCODE.UNIV-CD	0
9	3035	0.048	DB2A	SAEH6310	SAEB6969	DB2	2570	SELECT FSCD_RTG_METH_CD , FA_TYP_CD INTO :DCLSAV12100-FSCD	0
10	3035	0.086	DB2A	SAEH6310	SAEB6969	DB2	2629	SELECT CONTR_CLS_CD , MBR_MCSA_EFF_DT , MBR_MCSA_END_DT INTO :DCLSAV09100-MBR-MCSA	0
11	3035	0.117	DB2A	SAEH6310	SAEB6969	DB2	2971	SELECT FSCBR_ID , FSCBR_END_DT INTO :DCLSAV09100-FSCBR	0
12	3035	0.000	DB2A	SAEH6310	SAEB6969	DB2	3052	OPEN MBRCXBILR_CSR	0
13	3035	0.128	DB2A	SAEH6310	SAEB6969	DB2	3215	FETCH MBRCXBILR_CSR INTO :DCLSAV10000-MBRCXBILR.FSCBR-M	0
14	3035	0.000	DB2A	SAEH6310	SAEB0002	DB2	1849	SET HOST VARIABLE WS-CURRENT-DATE = CURRENT_DATE	0
15	3035	0.000	DB2A	SAEH6310	SAEB0003	DB2	324	SELECT UNIV_CD_DESC_TXT INTO :DCLSAV00000-UNIVCODE.UNIV-CD	0
16	3035	0.226	DB2A	SAEH6310	SAEB6969	DB2	3754	UPDATE SAV10000_MBRCXBILR SET FSCBR_ID = :WS-MISC-AREA.V	0
17	3035	0.000	DB2A	SAEH6310	SAEB6969	DB2	3215	FETCH MBRCXBILR_CSR INTO :DCLSAV10000-MBRCXBILR.FSCBR-M	100
18	3035	0.000	DB2A	SAEH6310	SAEB6969	DB2	3482	CLOSE MBRCXBILR_CSR	0
19	3035	0.000	DB2A	SAEH6310	SAEH6312	DB2	2286	FETCH MBRS INTO :DCLSAV05801-MBR-COVG.MBR-COVG-ID , :DCLSAV00000-MBR-COVG.MBR-COVG-ID	0
20	3035	0.000	DB2A	SAEH6310	SAEB0002	DB2	1849	SET HOST VARIABLE WS-CURRENT-DATE = CURRENT_DATE	0
21	3035	0.000	DB2A	SAEH6310	SAEB0003	DB2	324	SELECT UNIV_CD_DESC_TXT INTO :DCLSAV00000-UNIVCODE.UNIV-CD	0
22	3035	0.000	DB2A	SAEH6310	SAEB0002	DB2	1849	SET HOST VARIABLE WS-CURRENT-DATE = CURRENT_DATE	0
23	3035	0.000	DB2A	SAEH6310	SAEB0003	DB2	324	SELECT UNIV_CD_DESC_TXT INTO :DCLSAV00000-UNIVCODE.UNIV-CD	0
24	3035	0.000	DB2A	SAEH6310	SAEB6969	DB2	2570	SELECT FSCD_RTG_METH_CD , FA_TYP_CD INTO :DCLSAV12100-FSCD	0
25	3035	0.044	DB2A	SAEH6310	SAEB6969	DB2	2629	SELECT CONTR_CLS_CD , MBR_MCSA_EFF_DT , MBR_MCSA_END_DT INTO :DCLSAV09100-MBR-MCSA	0
26	3035	0.001	DB2A	SAEH6310	SAEB6969	DB2	2971	SELECT FSCBR_ID , FSCBR_END_DT INTO :DCLSAV09100-FSCBR	0
27	3035	0.000	DB2A	SAEH6310	SAEB6969	DB2	3052	OPEN MBRCXBILR_CSR	0
28	3035	0.038	DB2A	SAEH6310	SAEB6969	DB2	3215	FETCH MBRCXBILR_CSR INTO :DCLSAV10000-MBRCXBILR.FSCBR-M	0

## Files Accessed in Call Path for *Job 29 / Step 7* - Data View

	Type	Table/File Name	Identifier	C	R	U	D	Total
	DB2	SATSB097_MBR_ID_NO	DB2A		86			86
	DB2	SATSB118_MBR_TRIG	DB2A		52		51	103
▶	DB2	SATSB122_MBRMCSACT	DB2A	20	1,085	44		1,149
	DB2	SATSB123_MBRMCMCSA	DB2A	20	34			54
	DB2	SATSB127_HBP_IDCRD	DB2A		16			16
	DB2	SATFR102_FSCXBA	DB2A	10	108	8		126
	DB2	SATFR103_FNDARNGMT	DB2A		416			416

### Call Statements Accessing A Specific File

	Bus ID	Freq	Tot Resp	Subsystem	Trans/Step	Pgm/Pkg	Stmt #	Statement	Plan	COLLID
+	3035	18	0.007	DB2A	SAEH6310	SAEB6035	3150	SELECT MBRMC_CLS_EFF_DT , MBR_ID INTO :DCLSAV12200-MBRI	SAEH6310	PROD
▶	3035	16	0.280	DB2A	SAEH6310	SAEB6905	7944	INSERT INTO SAV12200_MBRMCSACT VALUES ( :DCLSAV12200-ME	SAEH6310	PROD
+	3035	16	0.074	DB2A	SAEH6310	SAEB6905	8775	UPDATE SAV12200_MBRMCSACT SET MBRMC_CLS_END_DT = :DC	SAEH6310	PROD
+	3035	32	0.012	DB2A	SAEH6310	SAEB6905	7062	FETCH REIN_CUR INTO :DCLSAV12200-MBRMCSACT.MBR-MCSA-IC	SAEH6310	PROD
+	3035	12	0.012	DB2A	SAEH6310	SAEB6910	5793	FETCH MBRMCSACT_CUR INTO :DCLSAV12200-MBRMCSACT.MBR-	SAEH6310	PROD
+	3035	4	0.179	DB2A	SAEH6310	SAEB6910	6424	INSERT INTO SAV12200_MBRMCSACT VALUES ( :DCLSAV12200-ME	SAEH6310	PROD
+	3035	6	0.145	DB2A	SAEH6310	SAEB6910	7234	UPDATE SAV12200_MBRMCSACT SET CONTR_CLS_CD = :DCLSAV	SAEH6310	PROD
+	3035	4	0.001	DB2A	SAEH6310	SAEB6910	5135	FETCH CLASS_DT_CSR INTO :DCLSAV12200-MBRMCSACT.MBRMC	SAEH6310	PROD
+	3035	86	0.023	DB2A	SAEH6310	SAEB6969	3328	FETCH MCSA_CUR INTO :DCLSAV12200-MBRMCSACT.MBR-MCSA-	SAEH6310	PROD
+	3035	416	0.704	DB2A	SAEH6310	SAEB6969	2629	SELECT CONTR_CLS_CD , MBR_MCSA_EFF_DT , MBR_MCSA_ENC	SAEH6310	PROD
+	3035	16	0.380	DB2A	SAEH6310	SAEH6311	6877	SELECT MIN ( MBR_MCSA_EFF_DT ) INTO :WS-ERR-FUTURE-MSG.	SAEH6310	PROD
+	3035	22	0.014	DB2A	SAEH6310	SAEH6311	7332	SELECT CONTR_CLS_CD INTO :DCLSAV12200-MBRMCSACT.CONTF	SAEH6310	PROD
+	3035	22	0.234	DB2A	SAEH6310	SAEH6311	8061	SELECT DISTINCT M . MBR_ID_NO INTO :W30-HOLD-AREA.WS-MBF	SAEH6310	PROD
+	3035	22	0.017	DB2A	SAEH6310	SAEH6311	8929	UPDATE SAV12200_MBRMCSACT SET PST_STA_CD = :BEN-ERROI	SAEH6310	PROD
+	3035	44	0.086	DB2A	SAEH6310	SAEH6311	8280	FETCH FIRM_ACTY_CSR INTO :DCLSAV12200-MBRMCSACT.MBR-M	SAEH6310	PROD
+	3035	2	0.000	DB2A	SAEH6310	SAEH6311	5940	FETCH CONTR_CLS_CSR INTO :DCLSAV12200-MBRMCSACT.CONTF	SAEH6310	PROD
+	3035	411	0.096	DB2A	SAEH6310	SAEH6312	2286	FETCH MBRS INTO :DCLSAV05801-MBR-COVG.MBRC-ID , :DCLSAV	SAEH6310	PROD

# Batch Transaction File Activity

Seq †	Resp †	Subsystem	Trans/Step	Pgm/Pkg	Call Type	Stmt # †	Statement †	Status
1	0.023	BATCH	STEP100	PROG2	PS	x'E26'	OPEN [TRANS] INPUT KC02177.TRANS.UPDATE2A	0
2	0.648	BATCH	STEP100	PROG2	VSAM	x'E42'	OPEN [MASTER] DIR KEYED KC02177.MIS4300.HAMPTON.MASTER	0
3	0.003	BATCH	STEP100	PROG2	PS	x'E5E'	OPEN [ERROR] OUTPUT ACSGB.ACSRVRUN.JOB02973.D0000104._	0
4	0.002	BATCH	STEP100	PROG2	PS	x'E7A'	OPEN [PRNT] OUTPUT ACSGB.ACSRVRUN.JOB02973.D0000103._	0
5	0.000	BATCH	STEP100	PROG2	PS	x'10EE'	READ [TRANS] KC02177.TRANS.UPDATE2A DATA=	0
6	0.000	BATCH	STEP100	PROG2	PS	x'1D76'	WRITE [PRNT] ACSGB.ACSRVRUN.JOB02973.D0000103._	0
7	0.000	BATCH	STEP100	PROG2	PS	x'1DB4'	WRITE [PRNT] ACSGB.ACSRVRUN.JOB02973.D0000103	0
8	0.000	BATCH	STEP100	PROG2	PS	x'1DF2'	WRITE [PRNT] ACSGB.ACSRVRUN.JOB02973.	0
9	0.000	BATCH	STEP100	PROG2	PS	x'2154'	WRITE [ERROR] ACSGB.ACSRVRUN.JOB0297	0
10	0.000	BATCH	STEP100	PROG2	PS	x'218E'	WRITE [ERROR] ACSGB.ACSRVRUN.JOB0297	0
11	0.000	BATCH	STEP100	PROG2	PS	x'21CC'	WRITE [ERROR] ACSGB.ACSRVRUN.JOB0297	0
12	0.000	BATCH	STEP100	PROG2	PS	x'220A'	WRITE [ERROR] ACSGB.ACSRVRUN.JOB02973.D0000104._	0
13	0.000	BATCH	STEP100	PROG2	PS	x'2064'	WRITE [ERROR] ACSGB.ACSRVRUN.JOB02973.D0000104._	0
14	0.000	BATCH	STEP100	PROG2	PS	x'20A2'	WRITE [ERROR] ACSGB.ACSRVRUN.JOB02973.D0000104._	0
15	0.000	BATCH	STEP100	PROG2	PS	x'10EE'	READ [TRANS] KC02177.TRANS.UPDATE2A DATA= 500	0
16	0.000	BATCH	STEP100	PROG2	VSAM	x'18D8'	READUPDT [MASTER] KC02177.MIS4300.HAMPTON.MASTER WHERE KEY= 500	0800016
17	0.000	BATCH	STEP100	PROG2	PS	x'2064'	WRITE [ERROR] ACSGB.ACSRVRUN.JOB02973.D0000104._	0
18	0.000	BATCH	STEP100	PROG2	PS	x'20A2'	WRITE [ERROR] ACSGB.ACSRVRUN.JOB02973.D0000104._	0
19	0.000	BATCH	STEP100	PROG2	PS	x'10EE'	READ [TRANS] KC02177.TRANS.UPDATE2A DATA=XXX	0
20	0.000	BATCH	STEP100	PROG2	PS	x'2064'	WRITE [ERROR] ACSGB.ACSRVRUN.JOB02973.D0000104._	0
21	0.000	BATCH	STEP100	PROG2	PS	x'20A2'	WRITE [ERROR] ACSGB.ACSRVRUN.JOB02973.D0000104._	0
22	0.000	BATCH	STEP100	PROG2	PS	x'10EE'	READ [TRANS] KC02177.TRANS.UPDATE2A DATA=00%5	0
23	0.000	BATCH	STEP100	PROG2	PS	x'2064'	WRITE [ERROR] ACSGB.ACSRVRUN.JOB02973.D0000104._	0
24	0.000	BATCH	STEP100	PROG2	PS	x'20A2'	WRITE [ERROR] ACSGB.ACSRVRUN.JOB02973.D0000104._	0
25	0.000	BATCH	STEP100	PROG2	PS	x'10EE'	READ [TRANS] KC02177.TRANS.UPDATE2A DATA=0001	0
26	0.000	BATCH	STEP100	PROG2	VSAM	x'15EA'	READUPDT [MASTER] KC02177.MIS4300.HAMPTON.MASTER WHERE KEY= 0001	0800016
27	0.000	BATCH	STEP100	PROG2	PS	x'1ED0'	WRITE [PRNT] ACSGB.ACSRVRUN.JOB02973.D0000103._	0
28	0.000	BATCH	STEP100	PROG2	PS	x'1F0E'	WRITE [PRNT] ACSGB.ACSRVRUN.JOB02973.D0000103._	0
29	0.001	BATCH	STEP100	PROG2	VSAM	x'16A6'	WRITE [MASTER] KC02177.MIS4300.HAMPTON.MASTER WHERE KEY= 0001	0
30	0.000	BATCH	STEP100	PROG2	PS	x'10EE'	READ [TRANS] KC02177.TRANS.UPDATE2A DATA=0005	0

Transaction File Reads

Data Identifying Transaction Function

WHERE KEY= 500

# Record Update Activity

Seq †	Resp †	Subsystem	Trans/Step	Pgm/Pkg	Call Type	Stmt # †	Statement †	Status	l
26	0.000	BATCH	STEP100	PROG2	VSAM	x'15EA'	READUPDT [MASTER] KC02177.MIS4300.HAMPTON.MASTER WHERE KEY= 0001	0800016	
27	0.000	BATCH	STEP100	PROG2	PS	x'1ED0'	WRITE [PRNT] ACSGB.ACSRVRUN.JOB02973.D0000103._	0	
28	0.000	BATCH	STEP100	PROG2	PS	x'1F0E'	WRITE [PRNT] ACSGB.ACSRVRUN.JOB02973.D0000103._	0	
29	0.001	BATCH	STEP100	PROG2	VSAM	x'16A6'	<del>WRITE [MASTER] KC02177.MIS4300.HAMPTON.MASTER WHERE KEY= 0001</del>	0	
30	0.000	BATCH	STEP100	PROG2	PS	x'10EE'	READ [TRANS] KC02177.TRANS.UPDATE2A DATA=0005	0	
31	0.000	BATCH	STEP100	PROG2	VSAM	x'18D8'	<del>READUPDT [MASTER] KC02177.MIS4300.HAMPTON.MASTER WHERE KEY= 0005</del>	0	
32	0.000	BATCH	STEP100	PROG2	PS	x'1ED0'	WRITE [PRNT] ACSGB.ACSRVRUN.JOB02973.D0000103._	0	
33	0.000	BATCH	STEP100	PROG2	PS	x'1F0E'	WRITE [PRNT] ACSGB.ACSRVRUN.JOB02973.D0000103._	0	
34	0.000	BATCH	STEP100	PROG2	PS	x'1ED0'	WRITE [PRNT] ACSGB.ACSRVRUN.JOB02973.D0000103._	0	
35	0.000	BATCH	STEP100	PROG2	PS	x'1F0E'	WRITE [PRNT] ACSGB.ACSRVRUN.JOB02973.D0000103._	0	
36	0.002	BATCH	STEP100	PROG2	VSAM	x'1A1E'	REWRITE [MASTER] KC02177.MIS4300.HAMPTON.MASTER	0	
37	0.000	BATCH	STEP100	PROG2	PS	x'10EE'	READ [TRANS] KC02177.TRANS.UPDATE2A DATA=0007	0	
38	0.000	BATCH	STEP100	PROG2	VSAM	x'1786'	READUPDT [MASTER] KC02177.MIS4300.HAMPTON.MASTER WHERE KEY= 0007	0	
39	0.000	BATCH	STEP100	PROG2	PS	x'1ED0'	WRITE [PRNT] ACSGB.ACSRVRUN.JOB02973.D0000103._	0	
40	0.000	BATCH	STEP100	PROG2	PS	x'1F0E'	WRITE [PRNT] ACSGB.ACSRVRUN.JOB02973.D0000103._	0	
41	0.001	BATCH	STEP100	PROG2	VSAM	x'184A'	DELETE [MASTER] KC02177.MIS4300.HAMPTON.MASTER	0	
42	0.000	BATCH	STEP100	PROG2	PS	x'10EE'	READ [TRANS] KC02177.TRANS.UPDATE2A DATA=0011	0	
43	0.000	BATCH	STEP100	PROG2	VSAM	x'18D8'	READUPDT [MASTER] KC02177.MIS4300.HAMPTON.MASTER WHERE KEY= 0011	0	
44	0.000	BATCH	STEP100	PROG2	PS	x'1ED0'	WRITE [PRNT] ACSGB.ACSRVRUN.JOB02973.D0000103._	0	
45	0.000	BATCH	STEP100	PROG2	PS	x'1F0E'	WRITE [PRNT] ACSGB.ACSRVRUN.JOB02973.D0000103._	0	
46	0.000	BATCH	STEP100	PROG2	PS	x'1ED0'	WRITE [PRNT] ACSGB.ACSRVRUN.JOB02973.D0000103._	0	
47	0.000	BATCH	STEP100	PROG2	PS	x'1F0E'	WRITE [PRNT] ACSGB.ACSRVRUN.JOB02973.D0000103._	0	
48	0.001	BATCH	STEP100	PROG2	VSAM	x'1A1E'	REWRITE [MASTER] KC02177.MIS4300.HAMPTON.MASTER	0	
49	0.000	BATCH	STEP100	PROG2	PS	x'10EE'	READ [TRANS] KC02177.TRANS.UPDATE2A DATA=0016	0	
50	0.000	BATCH	STEP100	PROG2	PS	x'1D76'	WRITE [PRNT] ACSGB.ACSRVRUN.JOB02973.D0000103._	0	
51	0.000	BATCH	STEP100	PROG2	PS	x'1DB4'	WRITE [PRNT] ACSGB.ACSRVRUN.JOB02973.D0000103._	0	
52	0.000	BATCH	STEP100	PROG2	PS	x'1DF2'	WRITE [PRNT] ACSGB.ACSRVRUN.JOB02973.D0000103._	0	
53	0.000	BATCH	STEP100	PROG2	VSAM	x'18D8'	READUPDT [MASTER] KC02177.MIS4300.HAMPTON.MASTER WHERE KEY= 0016	0	
54	0.000	BATCH	STEP100	PROG2	PS	x'1ED0'	WRITE [PRNT] ACSGB.ACSRVRUN.JOB02973.D0000103._	0	
55	0.000	BATCH	STEP100	PROG2	PS	x'1F0E'	WRITE [PRNT] ACSGB.ACSRVRUN.JOB02973.D0000103._	0	

Record Update



# Trigger File Summary

Sequence Number	Number of Stmts in Trigger Path	Status Code	File DD Name	User Comment
-----------------	---------------------------------	-------------	--------------	--------------

Seq	Type	# Stmt ‡	Elapsed Time †	Status	Cursor / DDN	Call Path ‡	Comment	Start Time
5	READ	10	0.302	0	TRANS		Blank transaction code	13:26:53.567
15	READ	4	0.121	0	TRANS		Master record not found	13:26:53.869
19	READ	3	0.091	0	TRANS		Invalid characters in trans code	13:26:53.991
22	READ	3	0.091	0	TRANS		Invalid characters in trans code	13:26:54.082
25	READ	5	0.152	0	TRANS		Update blank record	13:26:54.173
30	READ	7	0.212	0	TRANS		Update fixed salary	13:26:54.325
37	READ	5	0.151	0	TRANS		Valid delete	13:26:54.536
42	READ	7	0.211	0	TRANS		Update hourly salary	13:26:54.688
49	READ	10	0.303	0	TRANS		Update hourly salary	13:26:54.899
59	READ	5	0.151	0	TRANS		Add new employee	13:26:55.201
64	READ	7	0.214	0	TRANS			13:26:55.352
71	READ	4	0.121	0	TRANS			13:26:55.566

Update salary transaction

**NOTE:** Each line represents a read of the Trigger File and the beginning of processing a transaction.

# Trigger File Detail for Sequence #30 Read

## Source Navigation Logic Identified

Sequence Number    Program Name    Paragraph Name    Compile Line #    *Update salary transaction*

Inst #	Seq #	Pgm/Pkg	Pgm Ref	Stmt #	Call Type	Stmt Type	Status	Tables/Files/Pgm
-	1	30	PROG2	1300-PROCESS-LOOP	416	PS	READ	0 KC02177.TRANS.UPDATE2A
	# Paths	Path	Seq	Paragraph	Stmt #	Function	Description	
	1	1	1	1300-PROCESS-LOOP	417	READ CONDITION	NOT AT END	
	1	1	2	1300-PROCESS-LOOP	425	IF	ERR-CNT = 0	
	1	1	3	1300-PROCESS-LOOP	426	PERFORM	1500-PROCESS-TRANS	
	1	1	4	1500-PROCESS-TRANS	497	WHEN	[T-TRAN-TYPE] WHEN 'U'	
	1	1	5	1500-PROCESS-TRANS	498	PERFORM	1575-UPDATE-RECORD	
-	1	31	PROG2	1575-UPDATE-RECORD	558	VSAM	READUPDT	0 KC02177.MIS4300.HAMPTON.MASTEI
	# Paths	Path	Seq	Paragraph	Stmt #	Function	Description	
	4	1	1	1575-UPDATE-RECORD	563	READ CONDITION	NOT INVALID KEY	} Navigation Logic
	4	1	2	1575-UPDATE-RECORD	565	IF	ERR-CNT = 0	
	4	1	3	1575-UPDATE-RECORD	566	PERFORM	1825-PRINT-RECORD	
+	1	32	PROG2	1825-PRINT-RECORD	640	PS	WRITE	0 ACSGB.ACSTCRUN.JOB03999.D0000
+	1	33	PROG2	1825-PRINT-RECORD	642	PS	WRITE	0 ACSGB.ACSTCRUN.JOB03999.D0000
+	1	34	PROG2	1825-PRINT-RECORD	640	PS	WRITE	0 ACSGB.ACSTCRUN.JOB03999.D0000
+	1	35	PROG2	1825-PRINT-RECORD	642	PS	WRITE	0 ACSGB.ACSTCRUN.JOB03999.D0000
+	1	36	PROG2	1575-UPDATE-RECORD	569	VSAM	REWRITE	0 KC02177.MIS4300.HAMPTON.MASTEI

*Performance Information*

Calculate

**i** # Statements 7

Stmts Resp 00:00.001030

Stmts Interim 00:00.210817

Stmts Interim CPU 00:00.000892

Total Time 00:00.182411

CPU time 00:00.000173

# Compile Listing

## *Navigation Logic Highlighted*

Stmt #	Function	Description
563	READ CONDITION	NOT INVALID KEY
565	IF	ERR-CNT = 0
566	PERFORM	1825-PRINT-RECORD

Compile Line Number	Source Statements
000548	*****
000549	* 1575-UPDATE-RECORD: READS THE MASTER FILE BASED ON THE T-ID. *
000550	* IF THE RECORD IS NOT FOUND, THE ERROR IS RECORDED. IF THE *
000551	* RECORD IS FOUND THE CALCULATION OF NEW PAID AMOUNT IS *
000552	* PERFORMED. IF NO ERROR OCCURS IN THE CALCULATION, THE *
000553	* ORIGINAL MASTER RECORD IS PRINTED, THE DATA IS MOVED, THE *
000554	* UPDATED MASTER RECORD IS PRINTED AND REWRITTEN. *
000555	*****
000556	1575-UPDATE-RECORD.
000557	MOVE T-ID TO ID-KEY.
000558	READ MASTER-FILE INTO MASTER-DATA
000559	INVALID KEY
000560	1 ADD 1 TO ERR-CNT
000561	1 MOVE 9 TO E-CODE(9)
000562	1 ADD 1 TO TOT-INVAL-TRECS
000563	NOT INVALID KEY
000564	1 PERFORM 1600-PERFORM-CALC
000565	1 IF ERR-CNT = 0 THEN
000566	2 PERFORM 1825-PRINT-RECORD
000567	2 MOVE CALC-NEW-PAID TO M-CUR-PAID
000568	2 PERFORM 1825-PRINT-RECORD
000569	2 REWRITE MASTER-REC FROM MASTER-DATA
000570	3 INVALID KEY DISPLAY 'COULD NOT REWRITE'
000571	2 END-REWRITE
000572	2 ADD 1 TO TOT-MRECS-U
000573	2 ADD 1 TO TOT-MRECS
000574	2 ADD 1 TO TOT-VAL-TRECS
000575	1 ELSE
000576	2 ADD 1 TO TOT-INVAL-TRECS
000577	1 END-IF
000578	END-READ.

Navigation Logic

